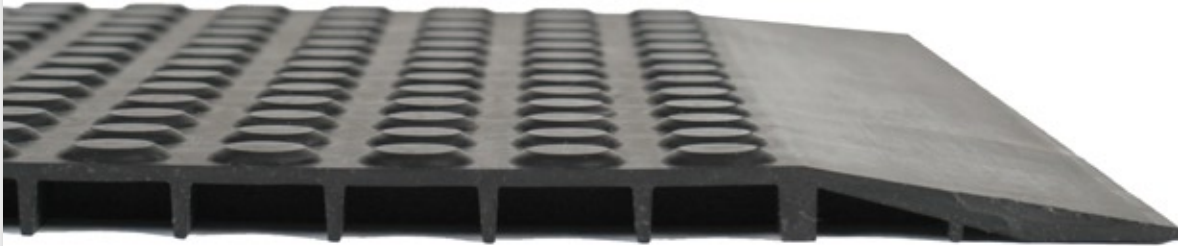
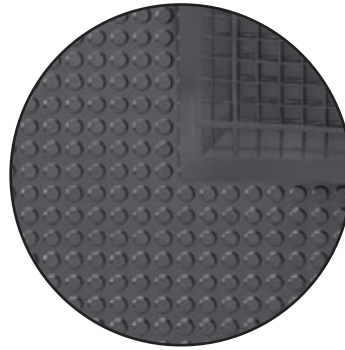


The Ergomat Nitril Smooth/Plano is made of pure Nitril rubber and is designed to increase comfort while reducing tripping hazards, body aches, quality issues, and sick leaves on areas where equipment is rolled. This is the ultimate flat mat for critical environments.



Unmatched Safety Features

- Molded beveled edges
 - They will never curl up, eliminating tripping hazards
- Almost any size and shape, always in one piece
 - No overlapping or worn-out connecting mats, also eliminating tripping hazards



Highest Quality

- Virgin raw material only
 - Unbeaten durability and lifetime ergonomic benefits
- Silicone & latex-free
- Not only anti-fatigue, but also true ergonomic benefits
 - Unique ergonomic designs, eliminating and preventing common problems encountered in standing environments stimulating the body to increase blood circulation and alertness that will reduce sick leave, workers' compensation and quality issues.

The Nitril Smooth/Plano Advantage

- A flat profile allows for trolley or cart traffic to easily move about the mat
- No loss of the ergonomic properties and no tripping hazard
- Meets USDA / CFIA standards
- Cleanroom ISO Class 5 (100)

3-Year Warranty

All Ergomat product lines are conditionally warranted against normal usage* 24 hours a day, 7 days a week. The warranty does not cover damage caused by the mat being dragged or pulled from a heavy load or items being pushed or dragged across the product, such as skids or pallets. The warranty against chemicals, oils, liquids, or other matter differs with the type of mat. Please consult your dealer or an Ergomat Rep to select the correct mat for your environment. The warranty periods starts from the date of purchase. The warranty only covers the replacement of the product, no direct or indirect costs are covered.

* It is considered normal usage when a person stands or walks on the Ergomat with regular footwear.

1.877. **ERGOMAT**.com

ERGOMAT Nitril Smooth / Plano

| Properties | Standard | ERGOMAT Nitril Smooth |
|------------------------------|------------------------------------|---|
| Material | | Nitrile |
| Color | | Black |
| Weight | | 3200 g +/- 50 g // 7 lbs +/- 1.75 oz |
| Length without beveled edges | | 80 cm +/- 1% // 31.5" +/- 1% |
| Width without beveled edges | | 50,17 cm +/- 1% // 19.75" +/- 1% |
| Thickness | | 11,5 mm // 0.43 in |
| Density | ISO 2781 | 1370 kg/m ³ |
| Hardness | ISO 868 | 50-60 Sh A |
| Friction | AVK Standard | 173 N |
| Abrasion Load = 5 N | ISO 46 49 (5N) | 92 mm ³ // 3.6 in ³ |
| Elongation at break | ISO 37 | 790% |
| Tearing strength | ISO 34 Method C | 28 N/mm |
| Electrical resistance | IEC-61340 4-1 / ESD STM7.1-2001 | >1x10 ¹⁰ Ω |
| Thermal Conductance | Table Value | 3,3 W/m/°C |
| Flame Point | Table Value | 400°C // 752°F |
| Heating Value | Table Value | 30 MJ/kg |
| Thermal properties | | |
| Minimum use | The ergonomic properties remain | -40°C // -40°F |
| Maximum use | | 90°C // 194°F |
| Maximum short duration | | 600°C // 1112°F |
| UV-resistance | | Inferior |
| Cleanroom application | EN ISO - 14644-1 | ISO Class 5 (100) |
| Warranty | | 3 years |